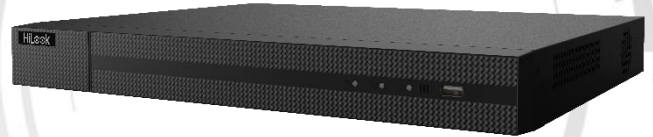


## DVR-200G-K2 SERIES TURBO HD DVR

### Key Feature

- Support H.265 Pro+/H.265 Pro/H.265 video compression
- Support HDTVI/AHD/CVI/CVBS/IP video input
- Up to 18-ch IP camera input (up to 5 MP)
- Max. 800 m for 1080p and 1200 m for 720p HDTVI signal transmission
- Up to 10 TB capacity per HDD



### Compression and Recording

- H.265 Pro+ video compression improves encoding efficiency and reduces data storage costs
- Full channel recording at up to 1080p lite resolution

### Storage and Playback

- 2 SATA interfaces
- Smart search for efficient playback

### Smart Function

- Support multiple VCA (Video Content Analytics) events for both analog and smart IP cameras
- Support 1-ch line crossing detection and intrusion detection

### Network & Ethernet Access

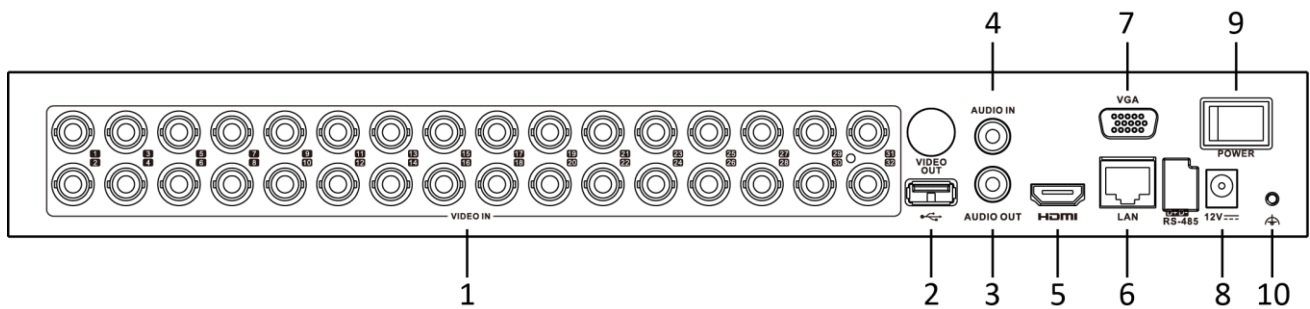
- HiLookVision & DDNS (Dynamic Domain Name System) for easy network management
- Configurable output bandwidth limit

## Specification

Model	DVR-216G-K2	DVR-224G-K2	DVR-232G-K2
<b>Perimeter Protection</b>			
Line Crossing Detection/ Intrusion Detection	1-ch		
<b>Recording</b>			
Video compression	H.265 Pro+/H.265 Pro/H.265/H.264+/H.264		
Encoding resolution	1080p lite/720p/VGA/WD1/4CIF/CIF		
Frame rate	Main stream: For 1080p stream access: 1080p lite/720p lite/WD1/4CIF/VGA@15fps; CIF@25fps (P)/30fps (N) For 720p stream access: 720p/WD1/4CIF/VGA@15fps; CIF@25fps (P)/30fps (N) For standard definition stream access: WD1/4CIF/VGA/CIF@25fps (P)/30fps (N)		
	Sub-stream: For 1080p and 720p stream access: CIF/QVGA@15fps For standard definition stream access: CIF/QVGA@25fps (P)/30fps (N)		
Video bit rate	32 Kbps to 4 Mbps		
Dual stream	Support		
Stream type	Video, Video & Audio		
Audio compression	G.711u		
Audio bit rate	64 Kbps		
<b>Video and Audio</b>			
IP video input	2-ch (up to 18-ch)		
	Up to 5 MP resolution		
	Support H.265+/H.265/H.264+/H.264 IP cameras		
Analog video input	16-ch	24-ch	32-ch
	BNC interface (1.0 Vp-p, 75 Ω), supporting coaxitron connection		
HDTVI input	1080p25, 1080p30, 720p25, 720p30		
AHD input	1080p25, 1080p30, 720p25, 720p30		
HDCVI input	1080p25, 1080p30, 720p25, 720p30		
CVBS input	PAL/NTSC		
HDMI/VGA output	1-ch, 1920 × 1080/60Hz, 1280 × 1024/60Hz, 1280 × 720/60Hz, 1024 × 768/60Hz		
Audio input	1-ch, RCA (2.0 Vp-p, 1 KΩ)		
Audio output	1-ch, RCA (Linear, 1 KΩ)		
Two-way audio	1-ch, RCA (2.0 Vp-p, 1 KΩ) (using the first audio input)		
Synchronous playback	16-ch		
<b>Network</b>			
Remote connections	128		
Network protocols	TCP/IP, PPPoE, DHCP, HiLookVision, DNS, DDNS, NTP, SADP, NFS, iSCSI, UPnP™, HTTPS, ONVIF		
Network interface	1, RJ45 10M/100M self-adaptive Ethernet interface	1, RJ45 10M/100M/1000M self-adaptive Ethernet interface	
<b>Auxiliary interface</b>			

<b>SATA</b>	2, SATA interface	
<b>Capacity</b>	Up to 10 TB capacity for each disk	
<b>USB interface</b>	Rear panel: 2 × USB 2.0	Front panel: 1 × USB 2.0 Rear panel: 1 × USB 3.0
<b>General</b>		
<b>Power supply</b>	12 VDC, 2.33 A	12 VDC, 3.2 A
<b>Consumption (without HDD)</b>	≤ 10 W	≤ 18 W
<b>Working temperature</b>	-10 °C to 55 °C (14 °F to 131 °F)	
<b>Working humidity</b>	10% to 90%	
<b>Dimension (W × D × H)</b>	380 × 320 × 48 mm (10.2 × 8.7 × 1.8 inch)	
<b>Weight (without HDD)</b>	≤ 2.0 kg (4.4 lb)	≤ 2.2 kg (4.9 lb)

## Physical Interface



\*: The rear panel of DVR-216/224G-K2 provides 16/24 video input interfaces. DVR-216G-K2 provides 2 USB 2.0 interfaces at rear panel, but no USB interface at front panel.

No.	Description	No.	Description
1	VIDEO IN	6	LAN Network Interface
2	USB Interface	7	VGA Interface
3	AUDIO OUT, RCA Connector	8	12 VDC Power Input
4	AUDIO IN, RCA Connector	9	Power Switch
5	HDMI Interface	10	GND

## Available Model

DVR-216G-K2, DVR-224G-K2, DVR-232G-K2